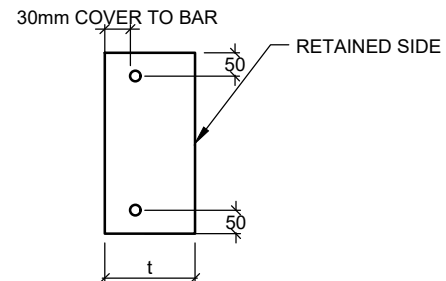
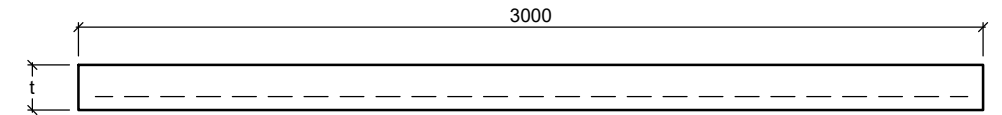


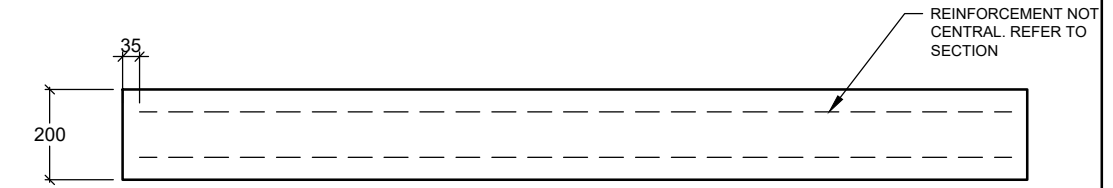
TYPICAL SLEEPER RETAINING WALL DETAIL



SECTION VIEW



PLAN VIEW



ELEVATION VIEW

ASSUMED SOIL PROPERTIES	
SOIL DENSITY (kN/m ³)	20
INTERNAL FRICTION ANGLE	30 DEGREE
MAXIMUM SURCHARGE (Q)	5kPa

SLEEPER SIZE = 3m LONG X 200mm DEEP			
WALL TYPE	THICKNESS (t)	REINFORCEMENT	SOIL RETAINED (H)
3.0m Type 1	100mm	2-N12	1.6m

SPECIFICATIONS:

- SLEEPER CONCRETE GRADE TO BE N40. CASTING EACH SLEEPER REQUIRES RIGID FORMWORK AND CONCRETE COMPACTION IN ACCORDANCE WITH AS3600
- THESE SLEEPER WALLS SPECIFICATIONS ARE ONLY SUITABLE FOR USE WITH RETAINING WALLS WHICH SATISFY THE FOLLOWING CONDITIONS:
 - THE WALL IS NOT SUBJECT TO HEAVY SURCHARGE LOADS, THE SURCHARGE LOADS THAT INCLUDED IN THIS CALCULATION IS 5kPa
 - THE FINAL SURFACE GRADIENT ABOVE THE WALL IS LEVEL OR ONLY SLIGHT (LESS THAN 1 VERTICAL RISE IN 10 HORIZONTAL)
 - THE WALLS BACKFILL IS FREE DRAINING CONSISTING OF SAND &/OR GRAVEL
 - ALL SUB-SURFACE WATER IS DRAINED BY MEANS OF AN AGRICULTURAL DRAIN, OR OTHER SUITABLE METHOD.
 - SLEEPERS ARE HANDLED WITH DUE CARE DURING TRANSPORTATION AND ERECTION
- SLEEPER MINIMUM END BEARING LENGTH SHALL NOT BE LESS THAN 25mm EACH END

REVISION	AMENDED DESCRIPTION	DRAWN BY	DATE
A	FOR CONSTRUCTION	B.E.	22.05.20